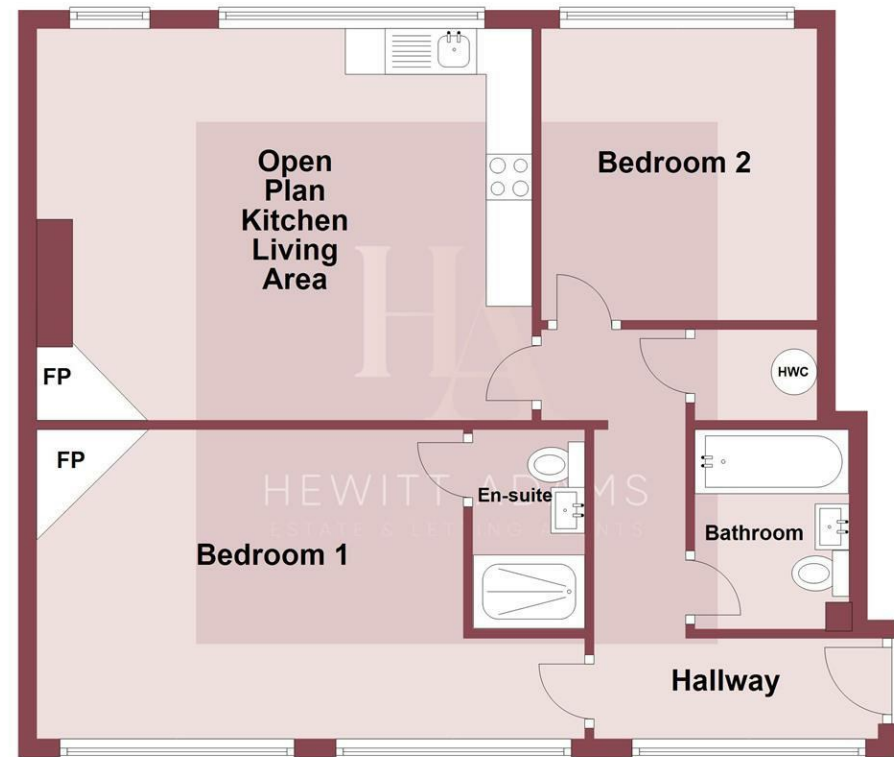




First Floor Apartment



Whilst every attempt has been made to ensure the accuracy of this floor plan contained here, measurements of doors, windows, room and any other items are approximate and no responsibility is taken for any error, omission or mis-statement. The plan is for illustrative purposes only and should be used as such by any prospective purchaser. The services, systems and appliances shown here have not been tested and no guarantee to their operability or efficiency can be given.
Plan produced using PlanUp.

Fazakerley Street, Liverpool, Merseyside L3 9DL

£1,150

2 Bedroom 1 Reception 2 Bathroom D

***Liverpool City Centre Luxury Development - Welcome to 'Design House' - Incredible Finish & Specification ***

Hewitt Adams is delighted to offer TO LET one of just nine luxury and individual apartments located in the heart of Liverpool's vibrant business district.

Each apartment comes equipped with a superb high specification Kitchen, Bathroom & En-Suite as standard and each unit then comes with their own incredible individual selling features, whether that's a Secret Garden, Exposed brick feature walls, Ornate wood panelled walls, Farrow and Ball painted feature walls, Original Parquet flooring and Juliet balconies to name but a few of the highlights!

Although there is no on site Parking, there is contract parking available within close proximity to the development, which you will need to make your own enquires about.

Unfurnished, Available Early May 2026 , Not Suitable For Pets

Entrance

Communal doorway with intercom access, this apartment is located on the first floor which is shared with just one other apartment.

Hallway

Window to the rear elevation flooding the hallway with natural light! Intercom access, electric heater, inset spot lights, Parquet flooring, storage cupboard housing the hot water tank.

Kitchen/Diner/Lounge

17'05x14'10 (5.31mx4.52m)

A superb open plan space which consists of: Wall and base units with worktops and splash back walls, under cabinet LED lighting, inset sink and drainer with mixer tap. Integrated appliances include: Tall fridge/freezer, washer/drier, dishwasher, electric oven, hob and extractor fan.

Furthermore the room benefits from inset spot lights, wall mounted electric heater, luxury vinyl flooring, wall mounted TV point, Parquet flooring, panelled walls with feature wall and ceiling pendant lights, exposed brick wall, two windows to the front elevation.

Bedroom 1

15'03x11'0 (4.65mx3.35m)

Two windows to the rear elevation, electric heater, inset spot lights, wall mounted TV socket, exposed brick chimney breast.

En-Suite

Shower cubicle with thermostatic shower, WC and wash basin with mixer tap vanity unit, heated towel rail, fully tiled walls and floors LED mirror.

Bedroom 2

10'05x9'10 (3.18mx3.00m)

Window to the front elevation, electric heater, inset spot lights, wall mounted TV socket.

Bathroom

Bath with wall mounted thermostatic shower, glass shower

screen, WC, wash basin vanity unit with mixer tap, heated towel rail, fully tiled walls and floors LED mirror.

